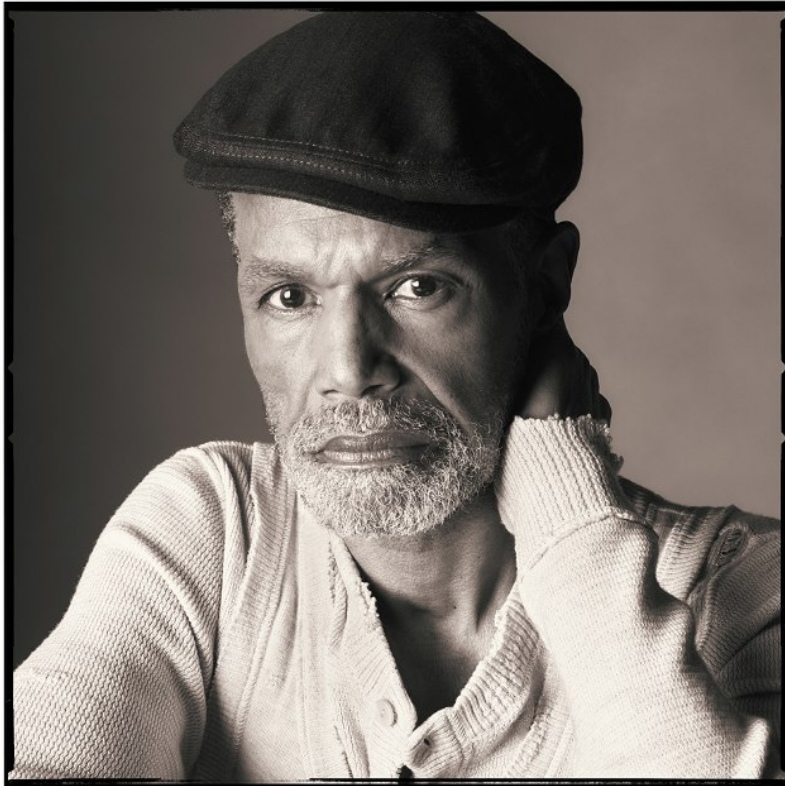


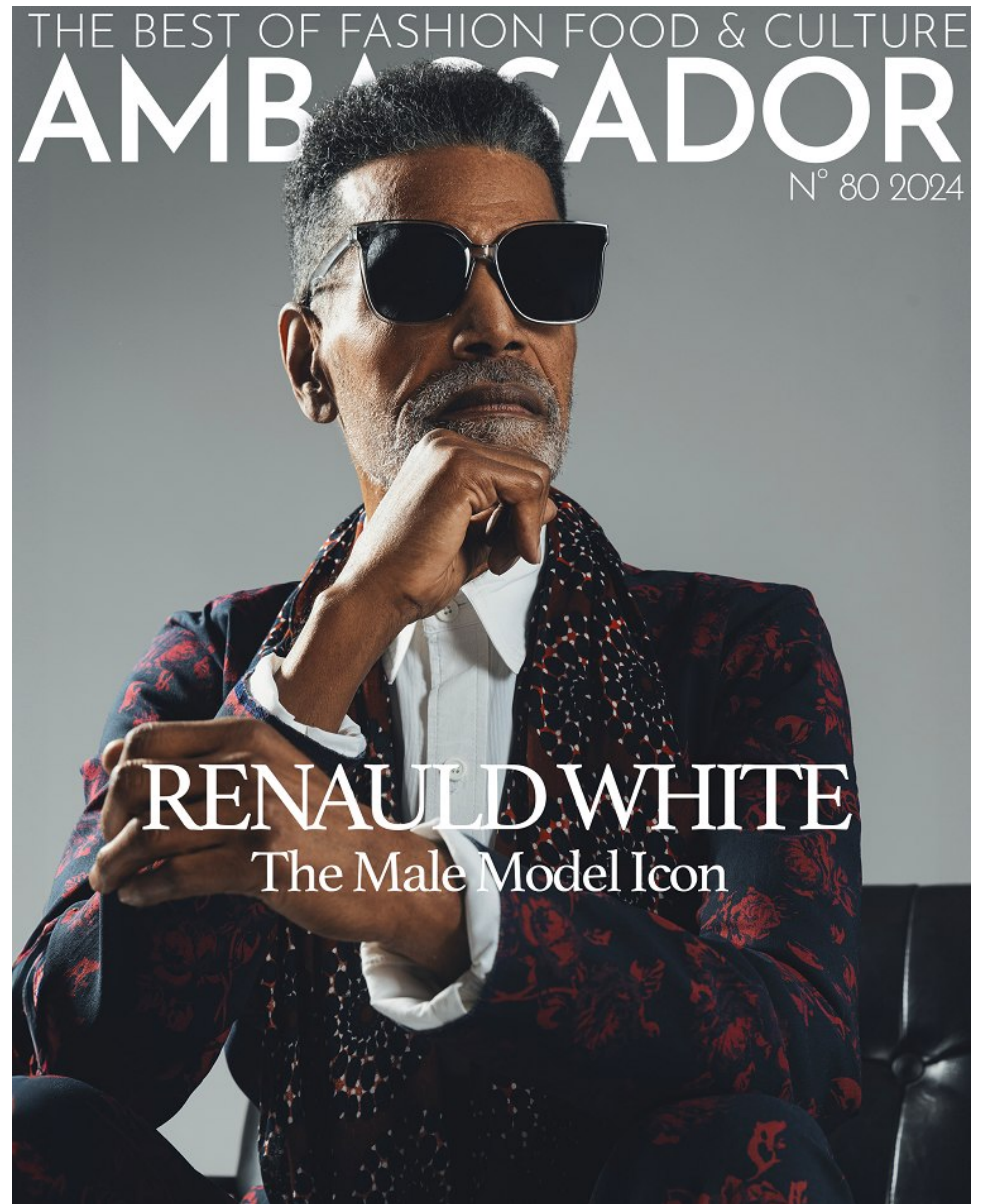
RENAULD WHITE

Height: 6'2"   Waist: 32"   Collar: 15.5"   Suit: 40   Shoe: 11.5 US   Shoe: 11.5   Hair: Black   Eyes: Brown

RENAULD WHITE  
PHOTOGRAPHED BY STEVEN MEISEL



**DOLCE & GABBANA**



**RENAULD WHITE**

Height: 6'2"   Waist: 32"   Collar: 15.5"   Suit: 40   Shoe: 11.5 US   Shoe: 11.5   Hair: Black   Eyes: Brown





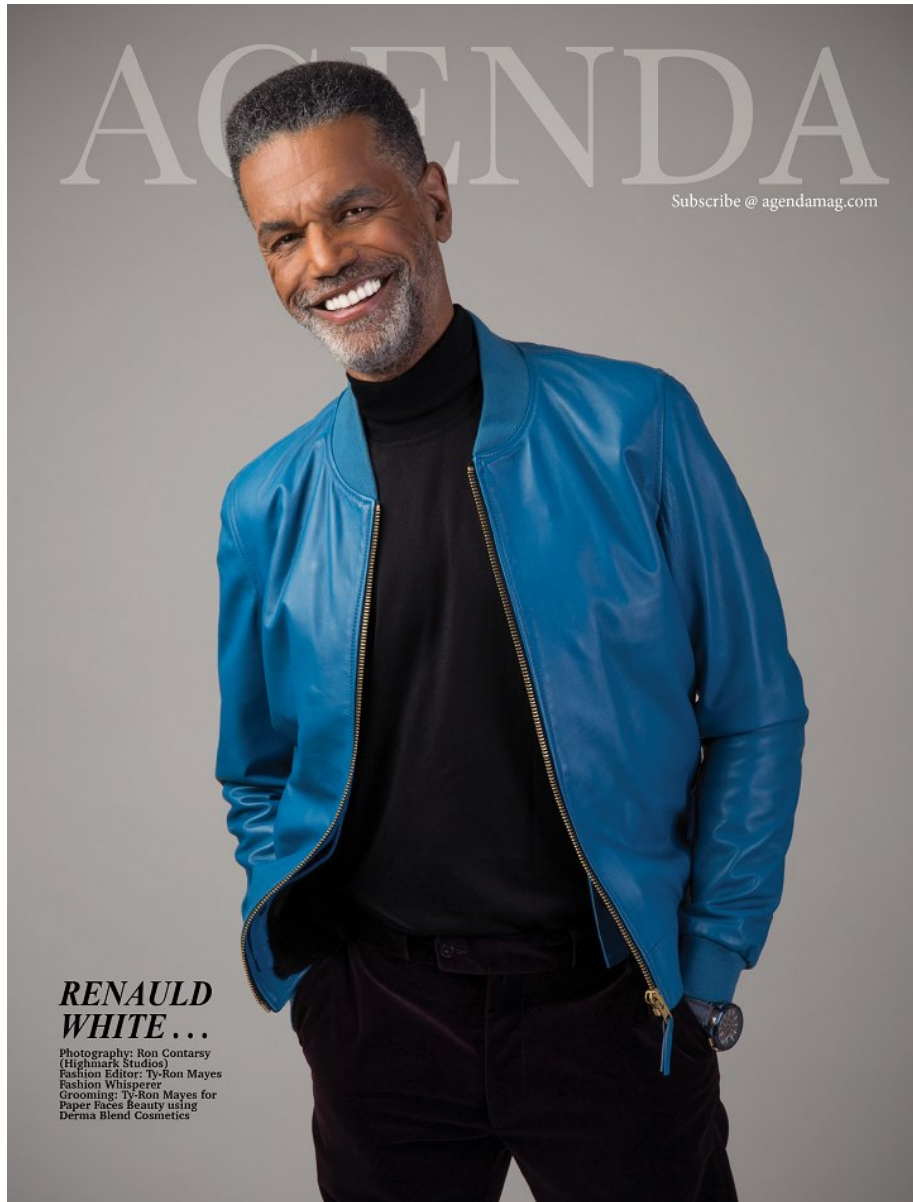
RENAULD WHITE  
PHOTOGRAPHED BY STEVEN MEISEL



DOLCE & GABBANA

RENAULD WHITE

Height: 6'2" Waist: 32" Collar: 15.5" Suit: 40 Shoe: 11.5 US Shoe: 11.5 Hair: Black Eyes: Brown



## RENAULD WHITE

Height: 6'2" Waist: 32" Collar: 15.5" Suit: 40 Shoe: 11.5 US Shoe: 11.5 Hair: Black Eyes: Brown





## RENAULD WHITE

Height: 6'2"   Waist: 32"   Collar: 15.5"   Suit: 40   Shoe: 11.5 US   Shoe: 11.5   Hair: Black   Eyes: Brown



Photography: Ron Contarsy  
(Highmark Studios)  
Fashion Editor: Ty-Ron Mayes  
Grooming: Ty-Ron Mayes for  
Paper Faces Beauty using  
Derma Blend Cosmetics  
Retouching: Ty-Ron Mayes

Renauld White is laid back and  
taking life one day at a time  
in this linen car length coat,  
gingham dress shirt, polka-dot  
tie, V-neck sweater and washed  
black skinny jeans, Stephen F.

100 AGENDA / COLLECTOR'S ISSUE 2021



## ***Celebrating Renault White:*** A Living Legend & Stylish Trailblazer!

Renauld White has done it all. The Jersey native is the first Black male supermodel in history. With five decades of modeling experience, runway shows, acting in TV shows, such as the *Guiding Light*, and being recognized as the first Black man to grace the cover of *GQ* magazine, it is apparent that the six-foot-two "Zaddy" has been a pioneer, as well as a social activist in the fashion industry. Renauld wasn't just a pretty face. White was and is a strong African American man, who challenged the system, fought for inclusivity, and broke through the rigid color barriers set by Madison Avenue.

Need more proof? Well, just stream Ralph Lauren's documentary *Very Ralph*, and you will see a young Renauld walking for the Lauren brand, inadvertently opening doors for the likes of Tyson Beckford, Datari Turner, and others.

Today Renauld continues to share his mega-watt smile, still making women swoon. If you're lucky, you might spot him around town collecting the perfect veggies for his ultra healthy meal plans. You could even bump into him in Central Park and watch him practicing his black belt to maintain that strong body and mind; or find him sitting front row at New York Fashion Week as photographers jockey to get the perfect shot. Now if you didn't catch any of those sightings, you can just flip through the pages of *Agenda's* "Changemakers," the 2021 collector's issue and celebrate Renauld White right here, as he models the newest collection from designer Stephen F.

*Ty-Ron Mayes - Fashion Whisperer*

101 AGENDA / CHANGEMAKERS

## RENAULD WHITE

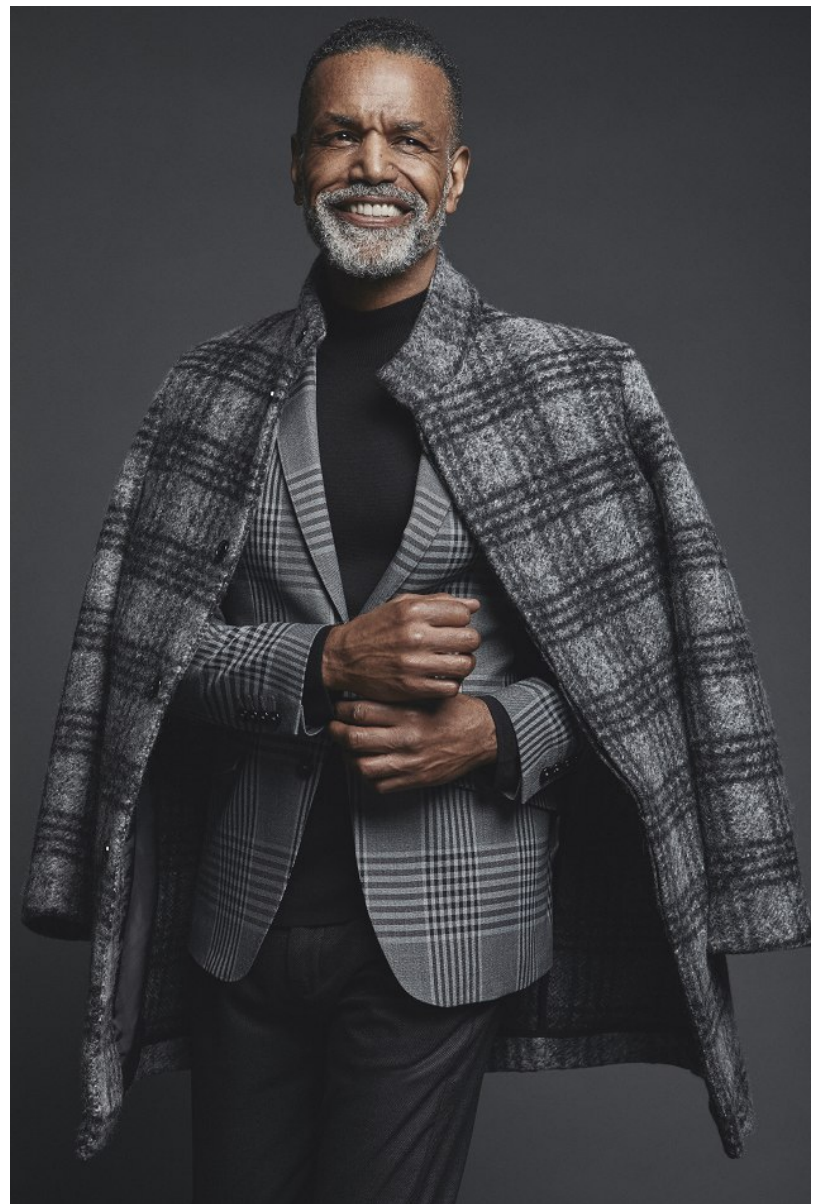
Height: 6'2" Waist: 32" Collar: 15.5" Suit: 40 Shoe: 11.5 US Shoe: 11.5 Hair: Black Eyes: Brown





## RENAULD WHITE

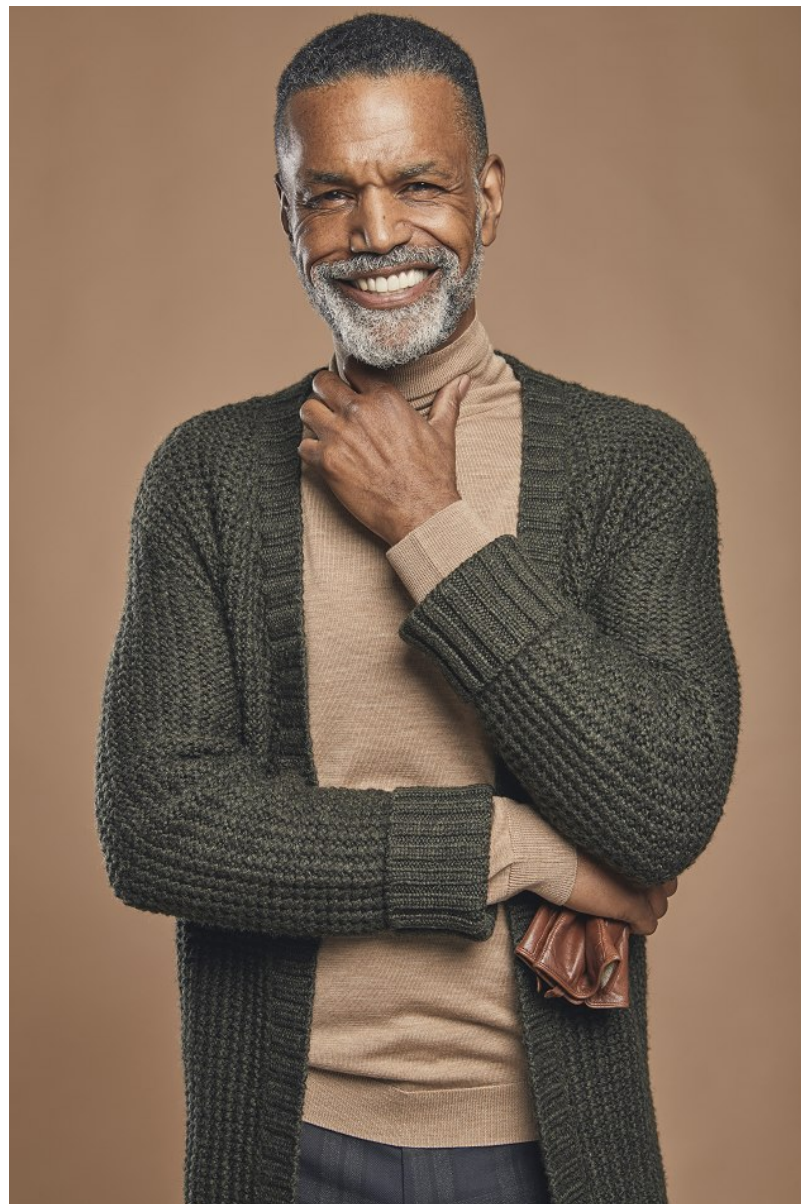
Height: 6'2" Waist: 32" Collar: 15.5" Suit: 40 Shoe: 11.5 US Shoe: 11.5 Hair: Black Eyes: Brown



## RENAULD WHITE

Height: 6'2" Waist: 32" Collar: 15.5" Suit: 40 Shoe: 11.5 US Shoe: 11.5 Hair: Black Eyes: Brown

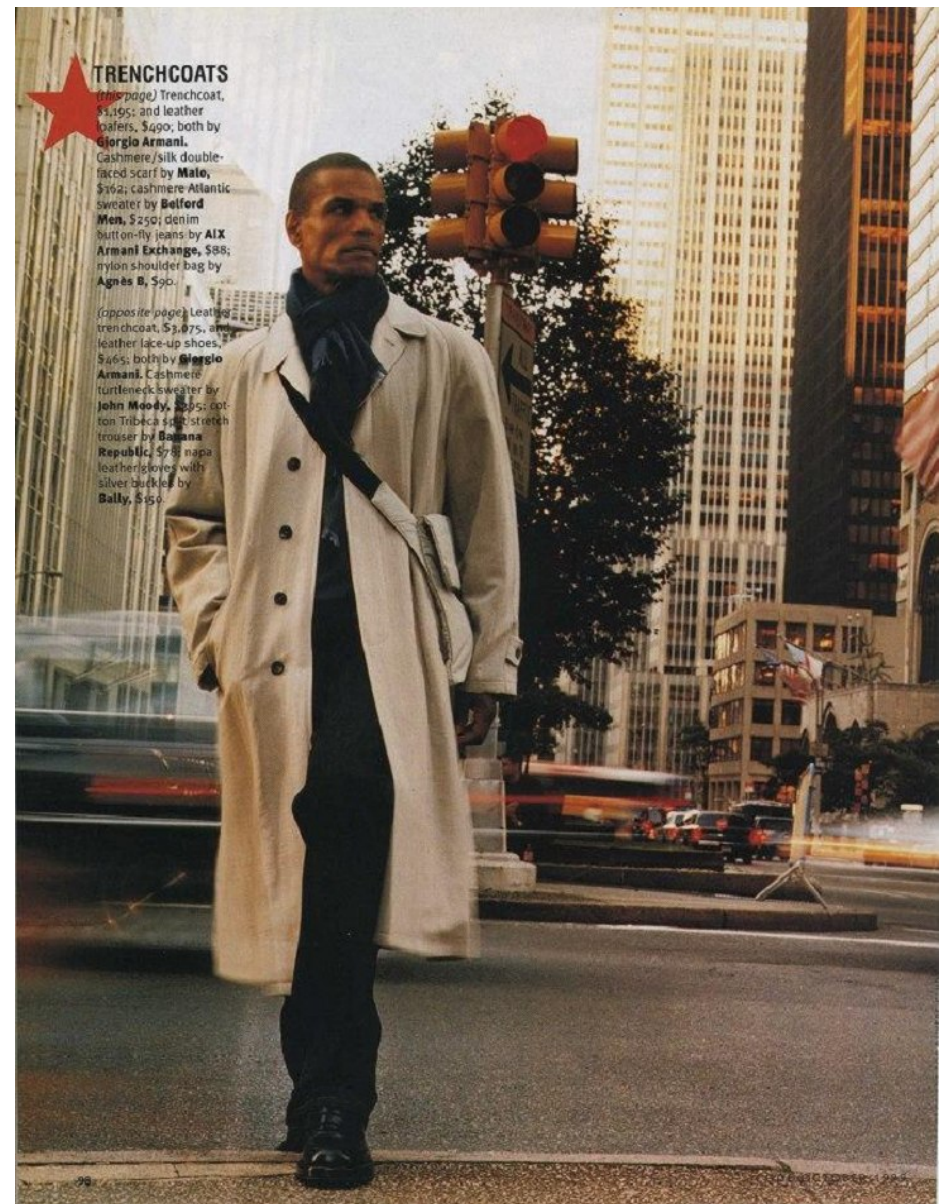
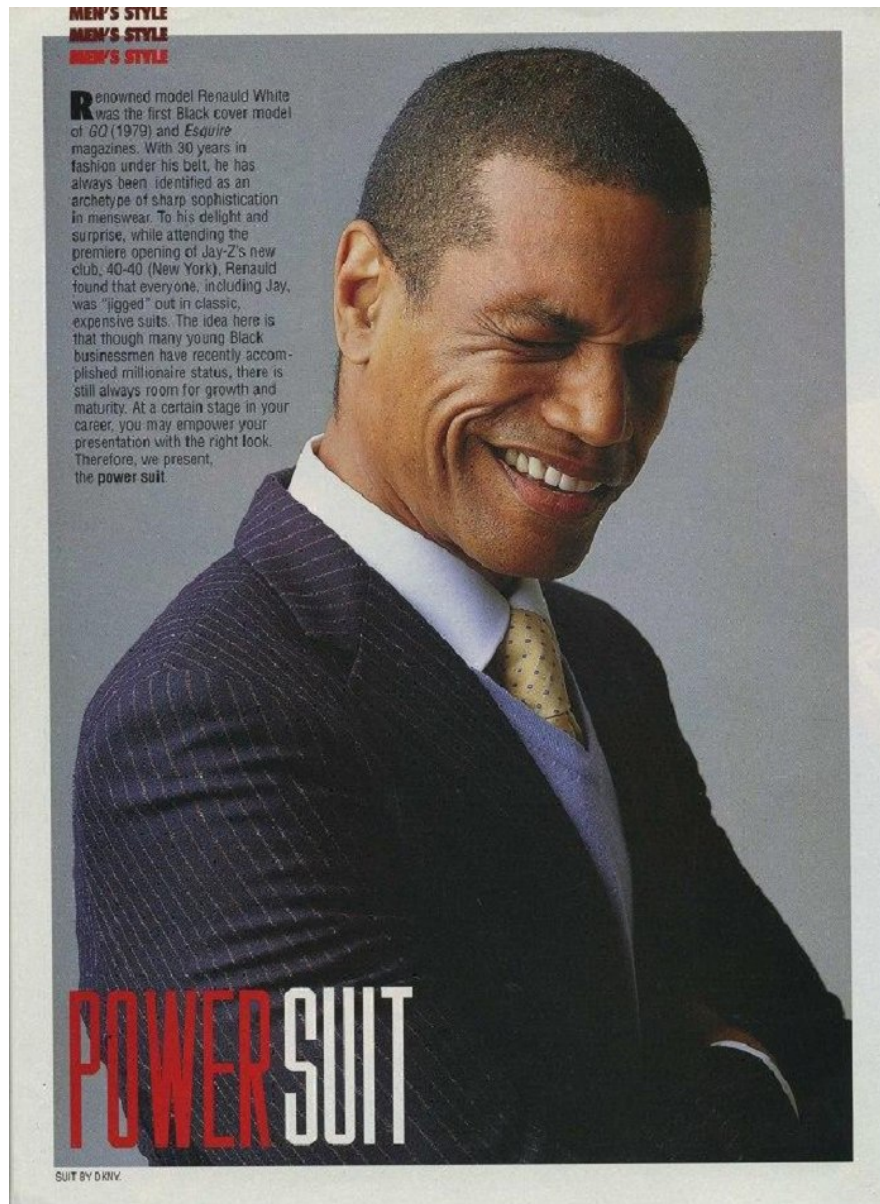




## RENAULD WHITE

Height: 6'2"   Waist: 32"   Collar: 15.5"   Suit: 40   Shoe: 11.5 US   Shoe: 11.5   Hair: Black   Eyes: Brown





RENAULD WHITE

Height: 6'2" Waist: 32" Collar: 15.5" Suit: 40 Shoe: 11.5 US Shoe: 11.5 Hair: Black Eyes: Brown

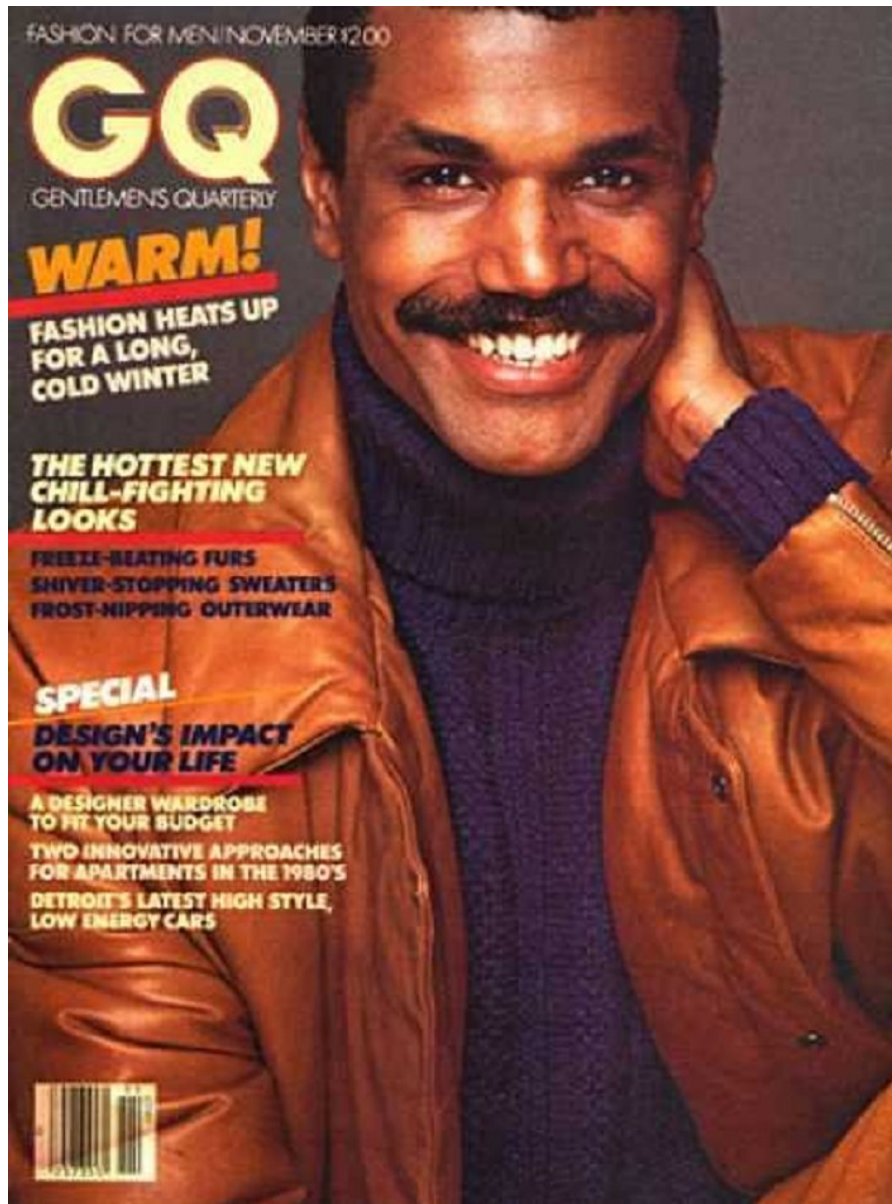




## RENAULD WHITE

Height: 6'2"   Waist: 32"   Collar: 15.5"   Suit: 40   Shoe: 11.5 US   Shoe: 11.5   Hair: Black   Eyes: Brown

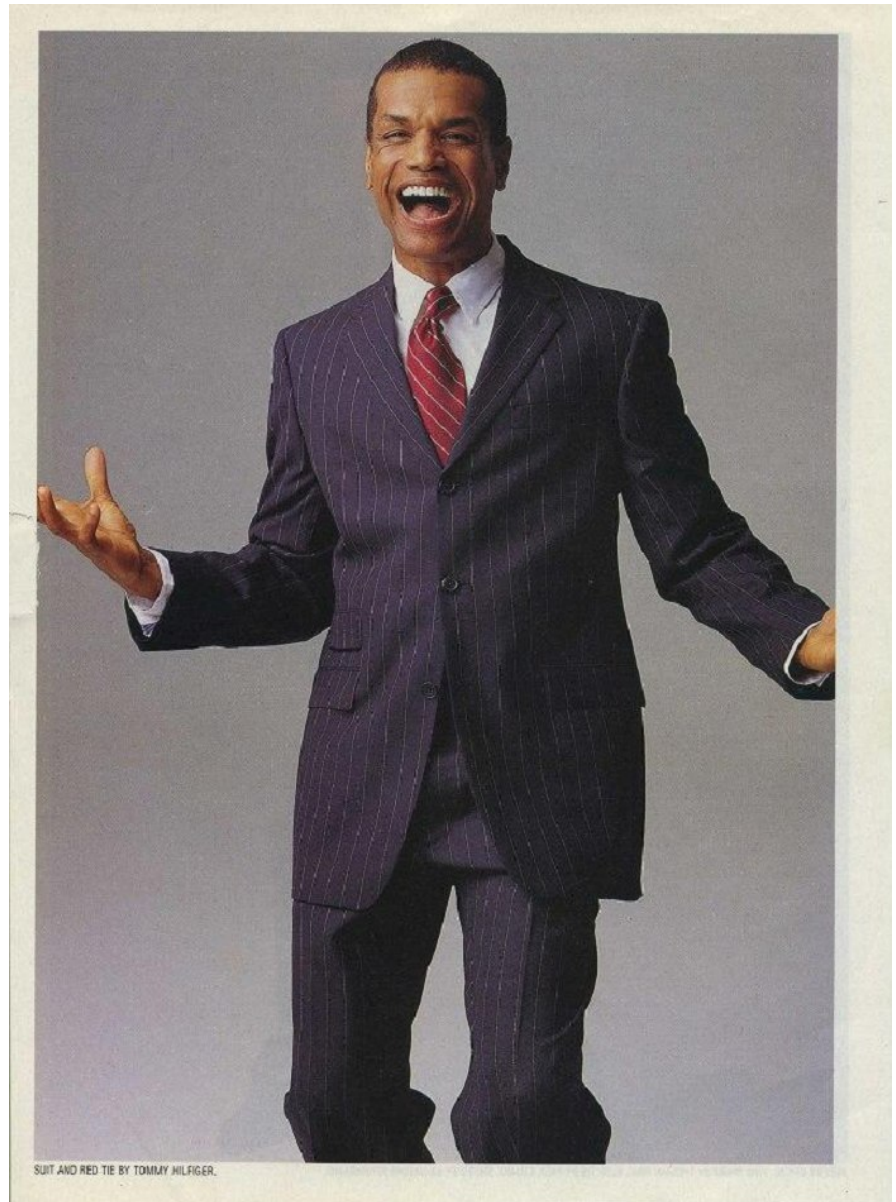
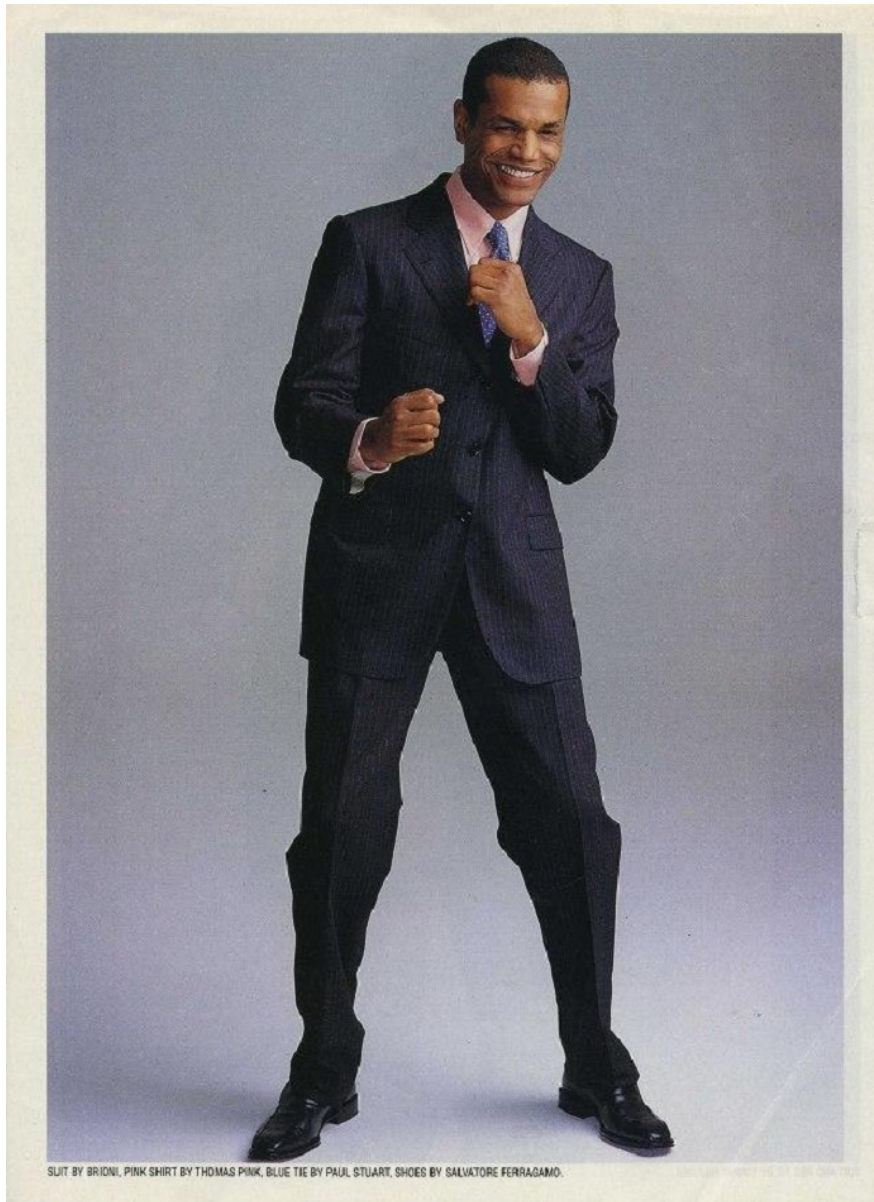




## RENAULD WHITE

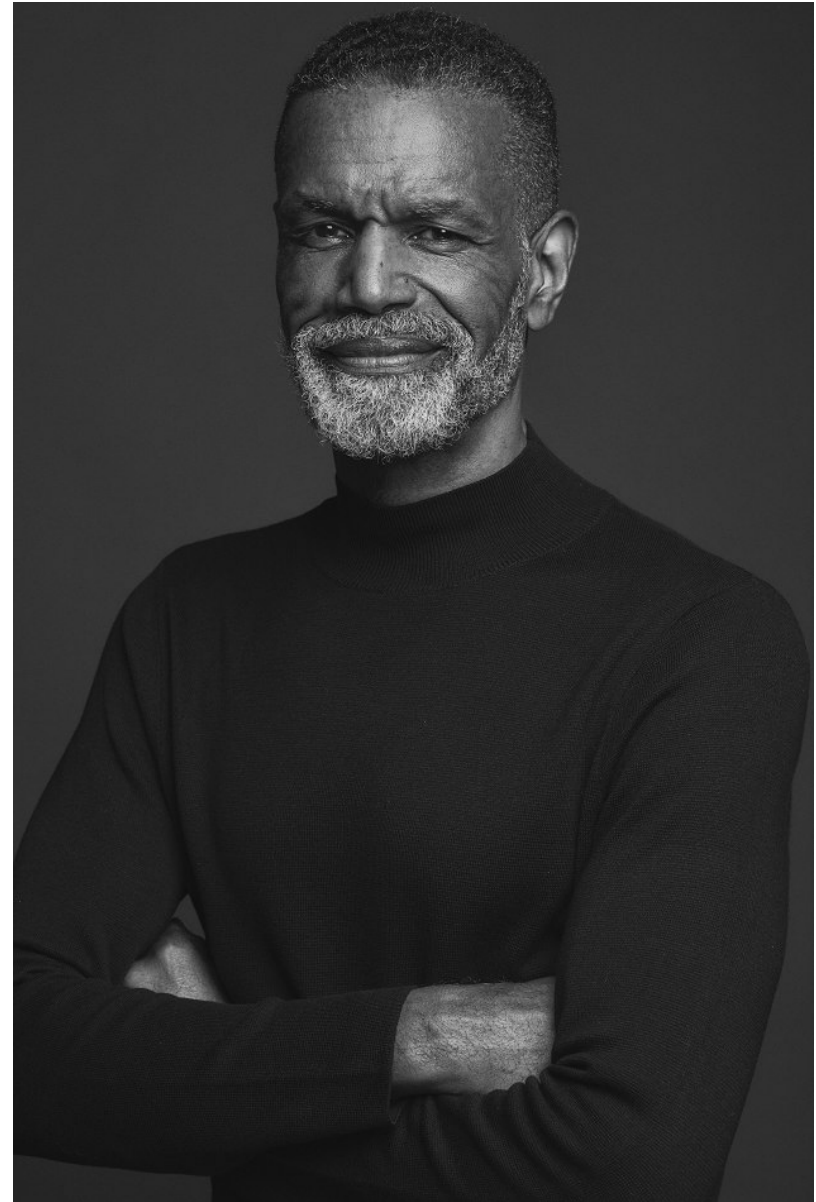
Height: 6'2" Waist: 32" Collar: 15.5" Suit: 40 Shoe: 11.5 US Shoe: 11.5 Hair: Black Eyes: Brown





## RENAULD WHITE

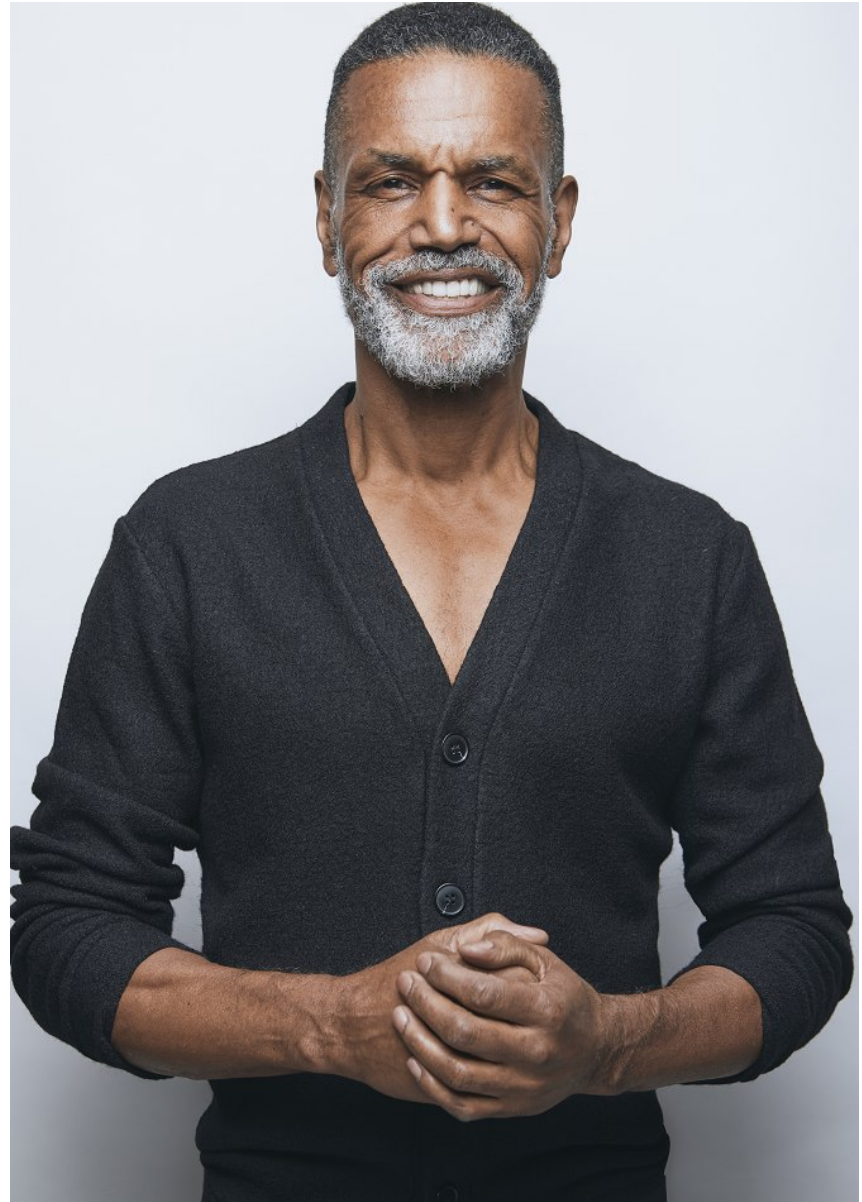
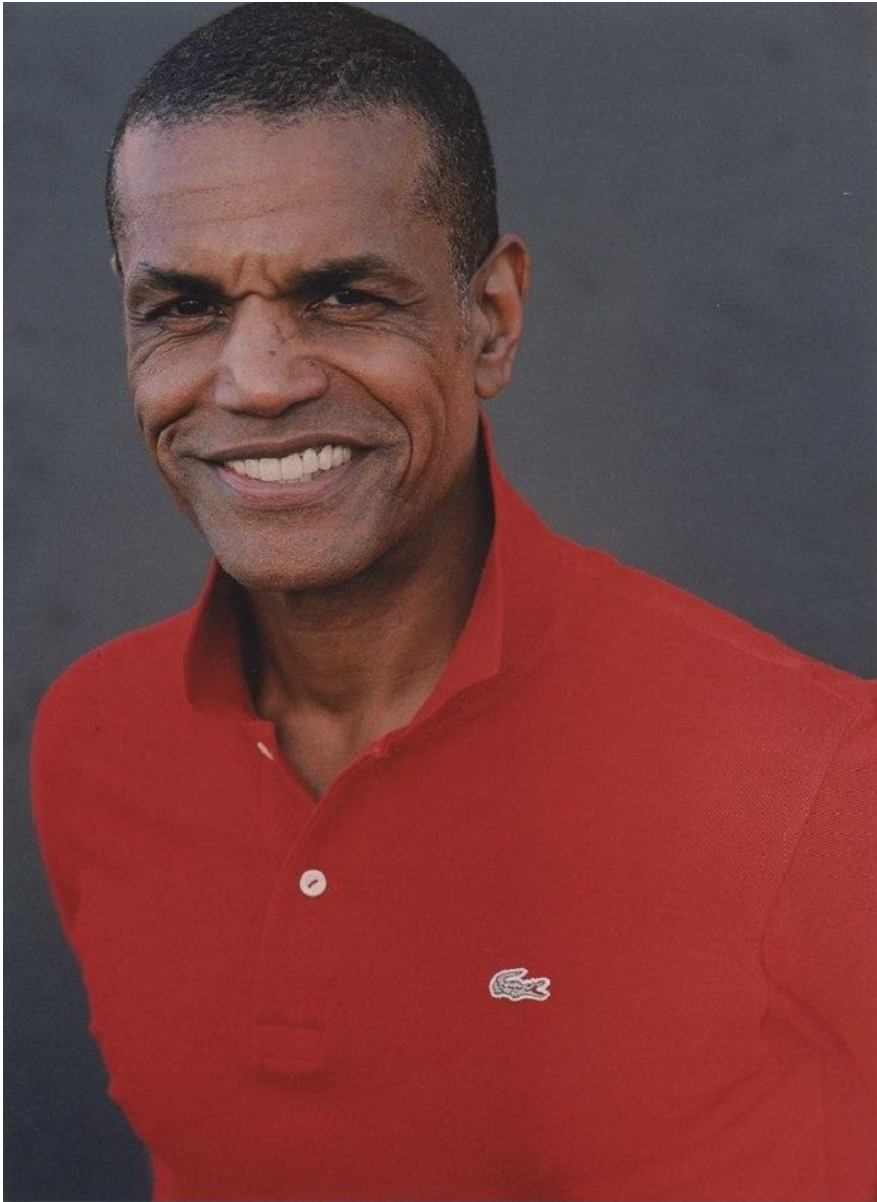
Height: 6'2" Waist: 32" Collar: 15.5" Suit: 40 Shoe: 11.5 US Shoe: 11.5 Hair: Black Eyes: Brown



RENAULD WHITE

Height: 6'2"   Waist: 32"   Collar: 15.5"   Suit: 40   Shoe: 11.5 US   Shoe: 11.5   Hair: Black   Eyes: Brown





RENAULD WHITE

Height: 6'2"   Waist: 32"   Collar: 15.5"   Suit: 40   Shoe: 11.5 US   Shoe: 11.5   Hair: Black   Eyes: Brown